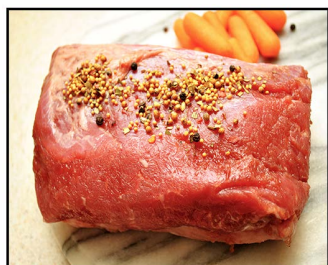




St. Patrick's Day Fare



Raw Corned Beef Brisket (15lb avg)

One of the most popular St. Patrick's Day dishes — "Corned Beef & Cabbage!" Approximately 15lb briskets in a raw state but have already gone through the "pickling" process. Seasoning packet included.

code: 7RCBB



Lamb Cubes (2each 5lb packs, 10lb case)

Cut from the leg, these lamb cubes are used for traditional lamb stew.

code: 2LCL



Ground Lamb (10lb case)

A favorite for centuries, ground lamb is the backbone of any good shepherds pie. Domestic lamb is double ground to produce this premium blend.

code: 2GL



Martin's Irish Bangers (4oz each, 10lb case)

These locally produced sausages utilize bread crumbs in the filling. Bangers are traditionally served with potatoes, which is why the name "Bangers & Mash" originated. During the meat shortage of World War 1, butchers had to increase the amount of water they used to make sausage. When heated the additional water would create steam that would burst through the casing with a loud "banging" sound...and the nickname was born.

code: 4IBM



St. Patrick's Day Fare



Irish Point Oysters (100 count)

This is a Prince Edward Island Cocktail size (2.75 inch) oyster. Grown in the Northern most point of PEI, Irish Point Oysters take more than 4 years to reach their market size. The flavor profile of Irish Point Oysters is a cold sweet brine with crunchy meat and a smooth finish.

code: SOYIP



Large Mahi Fillets (cut from 20lb and up fish)

Mahi is at its best from now until the late Spring, with favorable pricing and great quality!

Skin-on, Boneless — code: SMM Skin-off,
Boneless — code: SMMBS



Eastern Cove Jumbo Crab Meat (16oz can, 12lb case only)

Eastern Cove crab meat is steamed, handpicked, graded, and pasteurized to ensure quality and freshness. It is extremely easy to prepare your favorite crab meat recipes — crabcakes, pasta dishes, steak Oscar — the possibilities are endless!

code: SCMPJLC-CL